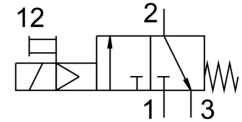


On/off valve MS4-EE-1/4-V24-B

Part number: 8091771

FESTO



Data sheet

Feature	Value
Series	MS
Size	4
Grid dimension	40 mm
Design	Poppet valve, electrically actuated
Manual override	Detenting Non-detenting
Type of reset	Mechanical spring
Type of piloting	Pilot actuated
Symbol	00991008
Valve function	3/2-way, closed, monostable
Operating pressure	0.3 MPa ... 0.7 MPa
Operating pressure	3 bar ... 7 bar
C value	8.36 l/sbar
b value	0.49
Standard nominal flow rate	2000 l/min
Standard nominal flow rate, exhaust 0.6-0 MPa (6-0 bar, 87-0 psi)	1600 l/min
Characteristic coil data	24 V DC: 2.3 W
Permissible voltage fluctuations	+/- 10 %
Switch-on time	29 ms
Operating medium	Compressed air to ISO 8573-1:2010 [7:4:4]
Corrosion resistance class CRC	1 - Low corrosion stress
Note on materials	RoHS-compliant
LABS (PWIS) conformity	VDMA24364-B1/B2-L
Media temperature	-5 °C ... 50 °C
Degree of protection	IP65
Ambient temperature	-5 °C ... 50 °C
Type of mounting	Via wall/surface bracket
Mounting position	Vertical +/-5°
Product weight	194 g
Pneumatic connection, port 1	G1/4
Pneumatic connection, port 2	G1/4
Pneumatic connection, port 3	G1/4
Pilot air supply	Internal
Electrical connection	Type C To EN 175301-803
Signal status display	With accessories

Feature	Value
Material seals	HNBR NBR
Material housing	PA-reinforced